

ACTR3 Antibody (monoclonal) (M02)**Mouse monoclonal antibody raised against a full length recombinant ACTR3.****Catalog # AT1035a****Specification**

ACTR3 Antibody (monoclonal) (M02) - Product Information

Application	WB, IHC, IF, E
Primary Accession	P61158
Other Accession	BC044590
Reactivity	Human
Host	Mouse
Clonality	Monoclonal
Isotype	IgG1 Kappa
Calculated MW	47371

ACTR3 Antibody (monoclonal) (M02) - Additional Information**Gene ID** 10096**Other Names**

Actin-related protein 3, Actin-like protein 3, ACTR3, ARP3

Target/Specificity

ACTR3 (AAH44590, 1 a.a. ~ 418 a.a) full-length recombinant protein with GST tag. MW of the GST tag alone is 26 KDa.

Dilution

WB~~1:500~1000

IHC~~1:100~500

IF~~1:50~200

E~~N/A

Format

Clear, colorless solution in phosphate buffered saline, pH 7.2 .

Storage

Store at -20°C or lower. Aliquot to avoid repeated freezing and thawing.

Precautions

ACTR3 Antibody (monoclonal) (M02) is for research use only and not for use in diagnostic or therapeutic procedures.

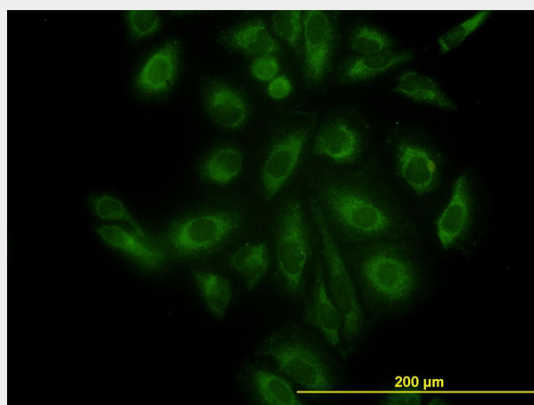
ACTR3 Antibody (monoclonal) (M02) - Protocols

Provided below are standard protocols that you may find useful for product applications.

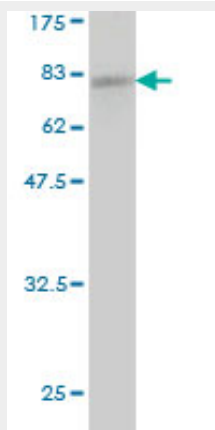
- [Western Blot](#)

- [Blocking Peptides](#)
- [Dot Blot](#)
- [Immunohistochemistry](#)
- [Immunofluorescence](#)
- [Immunoprecipitation](#)
- [Flow Cytometry](#)
- [Cell Culture](#)

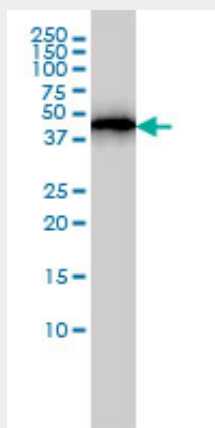
ACTR3 Antibody (monoclonal) (M02) - Images



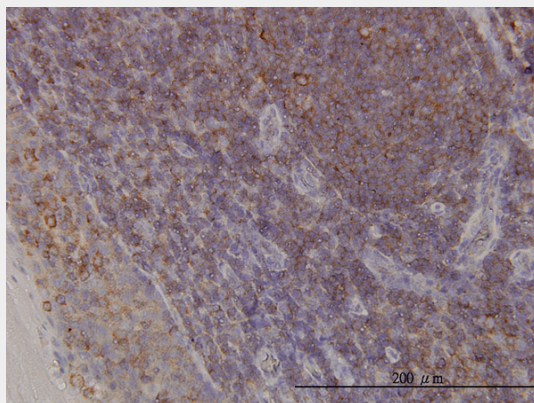
Immunofluorescence of monoclonal antibody to ACTR3 on HeLa cell. [antibody concentration 10 ug/ml]



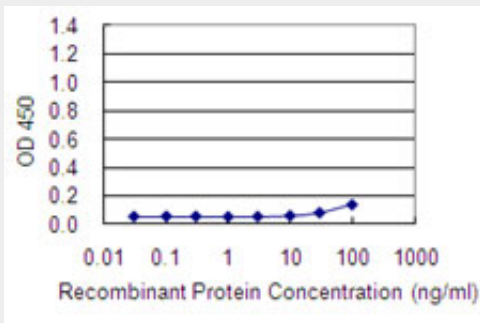
Antibody Reactive Against Recombinant Protein. Western Blot detection against Immunogen (71.72 KDa) .



ACTR3 monoclonal antibody (M02), clone 2B6 Western Blot analysis of ACTR3 expression in A-431 (Cat # AT1035a)



Immunoperoxidase of monoclonal antibody to ACTR3 on formalin-fixed paraffin-embedded human tonsil. [antibody concentration 6 ug/ml]



Detection limit for recombinant GST tagged ACTR3 is 10 ng/ml as a capture antibody.

ACTR3 Antibody (monoclonal) (M02) - Background

The specific function of this gene has not yet been determined; however, the protein it encodes is known to be a major constituent of the ARP2/3 complex. This complex is located at the cell surface and is essential to cell shape and motility through lamellipodial actin assembly and protrusion.

ACTR3 Antibody (monoclonal) (M02) - References

1. Laser Microdissection and Two-Dimensional Difference Gel Electrophoresis Reveal the Role of a Novel Macrophage-Capping Protein in Lymph Node Metastasis in Gastric Cancer. Ichikawa H, Kanda T, Kosugi SI, Kawachi Y, Sasaki H, Wakai T, Kondo TJ Proteome Res. 2013 Jul 9. 2. Annexin A2-Dependent Polymerization of Actin Mediates Endosome Biogenesis. Morel E, Parton RG, Gruenberg J. Dev Cell. 2009 Mar;16(3):445-57.